

Important Notice: After update the firmware, you need to do the reset to the radio firstly, power off the radio firstly. Then power it on while holding the PTT and the PF1 button below the PTT at the same time. The radio will start up with a note on the display stating MCU Reset, Please Wait – and do not turn the radio off while it restarts.

After a re-start the radio will display the setting of the date and the time. Use the up-down key to set the current year. Move to the month by pushing the P1 key. Set the month, and use the P1 key to move forward each step. Once done, click the Menu key to save the date and time.

Also please set up the time zone to avoid the date/time error.

Please make sure the codeplug is saved to PC before your do the update and reset.

D868UV firmware update V1.32 and V2.32

Hardware V1.0 --- Please use the firmware V1.32 for updating the radio.

Hardware V1.1 --- Please use the firmware V2.32 for updating the radio.

V1.32 and V2.32 Improvements (dated 2018-8-4)

1. Add support of character Ø in the display font in main channel. A Zero is displayed as “Ø”.
2. In radio menu, Talk Group -> TG List -> Select-> Select Contact, allow you assign a new TG for current channel, it is extremely useful when you create a new channel.

How to create a new channel: Hold pressing MENU key, until the LCD display “Next Please Press Dial Key”, press P1 key, the radio will enter into new channel setup.

3. Resolved the time error problem in the Call Log > Last Call > Last Call List.
4. Add DMR APRS Location reporting option in CPS, please refer to the APRS setup codeplug.

Important notice for DMR APRS:

- A) When DMR APRS is transmit or receive data, the radio will not response to any operations.
- B) Some one get the DMR APRS working perfectly, some one still can not get the DMR APRS working. We don't actually know the reason why it doesn't working. Welcome for any comments for DMR APRS, we will keep improving.
- C) Please keep the radio on your hand even if the DMR APRS is not working, we guess it is FW or Hotspot or Repeater or BM set up problem if it doesn't work. We will keep updating the FW.
- D) Since the D868UV CPU is with limited space, we can not add DMR APRS operations on radio menu, you can only set up DMR APRS on CPS.
- E) DMR APRS is only working when the GPS is positioned successfully.

V1.31 and V2.31 Improvements (dated 2018-7-14)

1. In CPS->Optional Setting->Power-on, add the Default Startup Channel and zone, it will allow you choose a startup channel, every time when you power on the radio, you will be at the start up channel.

2. Menu->Settings->Chan Set, add Select Contact, allow to choose a Contact and save the changes to channel.

3. Allow create a new channel on radio or delete an existing channel . Operation as below.

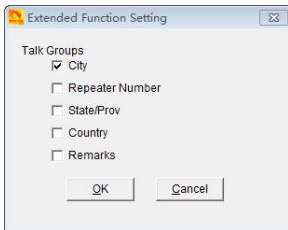
Create a new channel: Hold pressing MENU key, until the LCD display “Next Please Press Dial Key”, press P1 key, the radio will enter into new channel setup.

Delete an existing channel: Turn to the channel firstly, hold pressing MENU key, until the LCD

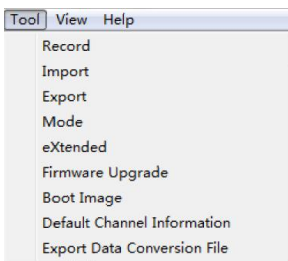
display “Next Please Press Dial Key”, press P2 key, the radio will allow deleting the channel.

Note:

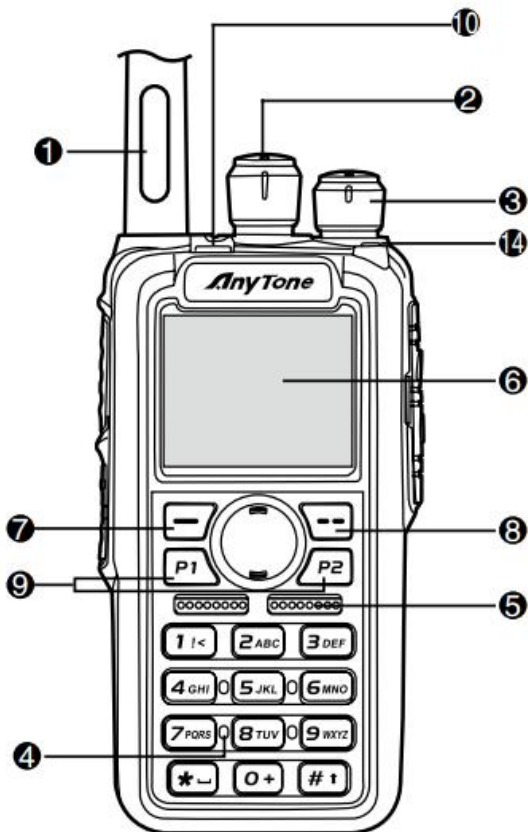
1. Since we have increased a Squelch off option for Analog mode afterwards FW2.23, when you open an old codeplug, please reset the analog squelch firstly.
2. Some reports the exported Talk Groups are missing some information, please remember to check on the boxes when you need more information, in CPS- Tool – Extended function.

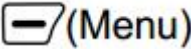



3. Tool – Export Data Conversion File, it will allow you save a codeplug in .dcf file. The exported .dcf file can be opened by latest 2.50 Contact Manager. Also you can directly load the .dcf file to CPS2.25 with changing the file open type to .dcf file.



How to know your firmware version



Press 7  (Menu) key to enter the menu, press  key to the Device Info and enter into the menu to check the hardware version.

Hardware V1.0 --- Please use the firmware V1.xx for updating the radio.

Hardware V1.1 --- Please use the firmware V2.xx for updating the radio.

If you use wrong firmware for updating, the radio will not work, but it is not broken. After load into correct firmware, it will work fine.

Actually the V1 and V2 firmware are almost same, just in/out is different, so every time when Engineer make updates, he will issue 2 firmwares at the same time.

The V1.1 hardware has below difference compare with V1.0 hardware.

- 1) no jumper wire
- 2) CPU IC in/out pin is different.